

BRIEFING NOTE TO CARE SERVICES/ PERSONAL ASSISTANTS

HOW TO ACCESS LATERAL FLOW DEVICE from 18th JAN 2021

From 18th January, lateral flow (LFD tests) will be made available to you from PPE hubs.

Note: Care at Home providers will be using the PCR test.

Click [\[here\]](#) for further details

(Document titled - “PCR testing by care at home staff: guidance for providers and staff”)

Accessing tests and guidance

If you or your service have not previously accessed the PPE Hub, from Monday 18th January, you should first phone your Contact Centre **0300 303 3020** to outline the required supply, quoting your name and profession for validation. The contact centre will advise the best local PPE Hub to pick up your tests.

Please note: training and education materials must be read thoroughly/completed prior to carrying out the first test.

Why testing is important

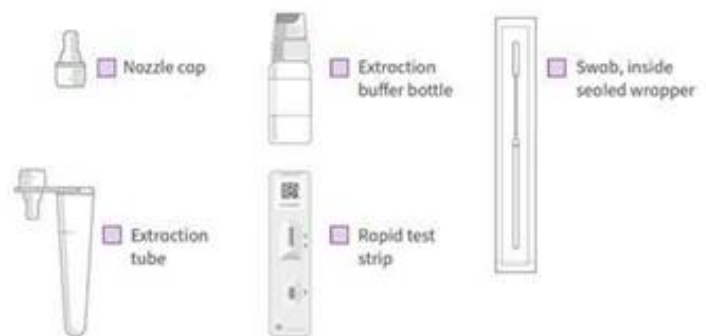
- identifies staff who currently have COVID-19 so they are able to self-isolate if positive
- protects those receiving care from infection passed to them by staff who are confirmed positive
- prevents and controls the spread of the virus by identifying asymptomatic cases

Tests are an extra layer of protection against the virus and should in no way mitigate existing infection and prevention control measures and the use of PPE.

The lateral flow test is provided in a box and each box contains:

- 25 x test kits
- 1 x bottle of solution

On this basis, kits must be issued in full box quantities to ensure that there is sufficient solution available for all tests on a local basis. It is recommended that services issue one box per worker, this should last the worker 8-12 weeks.



**For general enquiries contact the PPE Hub
01592 583153**

BRIEFING NOTE TO CARE SERVICES/ PERSONAL ASSISTANTS

HOW TO ACCESS LATERAL FLOW DEVICE from 18th JAN 2021

Note: Services should ensure all staff watch the video and read the guidance before undertaking the lateral flow test.

Click [\[here\]](#) to access guidance and video links

The video refers to the “the video being for healthcare workers”. This video is relevant for all care workers working in the community.

Points to note:

- If you receive a positive test, you must immediately report the result to your organisation, either via your the occupational health department, line manager or as per local guidelines.
- You must record the result of your test regardless of the results on the **COVID-19 Testing Results Portal:** www.covidtestingportal.scot
- Test kits should be stored at room temperature between 2°C and 30°C. Kits do not need refrigeration. They should be kept out of direct sunlight and not exposed to heat.

Note: It is the individual worker’s responsibility to record the test regardless of the results

How do services order LFT Kits?

Testing kits will be distributed via the PPE hubs at Bankhead and New City House. To order LFT kits complete the attached form and send to Fife.PPEHub@fife.gov.uk

Hub Opening Hours

- Bankhead Central, Glenrothes - Monday to Friday 9-5pm
- New City House, Dunfermline - Wednesday & Thursday 9-5pm

For general enquiries contact the PPE Hub
01592 583153